

ULI HINES STUDENT COMPETITION EUROPE 2025



Hines and the Urban Land Institute (ULI) have launched the ULI Hines student competition Europe 2025.

Who Can Apply

The competition is open to teams of university and business school students from any European educational institution.

Multidisciplinary teams of four will engage in a challenging exercise in responsible land use which tests their understanding of the core elements of real estate:

Financial modelling

Design and architecture

Planning and development

Investment

Social and environmental issues



If you are struggling to form a team, please email Europe.events@uli.org and we can introduce you to other students to form an intercollegiate team.

Benefits of applying

All participants will benefit from career-enhancing experiences, connections, and mentoring from senior professionals, while putting their skills to the test!

“This competition continues to provide a high quality platform for those starting out in the industry to develop their real estate expertise, and delivers a springboard for students to propel their careers.”

Lars Huber, CEO, Hines Europe

Hear from previous winners:



How the Competition Works

STAGE 1:

Film and submit application video by
FRIDAY 14th FEBRUARY 2025.



Expert panel review applications and
determine finalist teams.

ULI to notify teams of
status early-March 2024.



STAGE 2:

Teams invited to attend an evening networking
reception at Hines World-Class European
Headquarters, Grainhouse, Located in Covent
Garden, London, 3rd April 2025.



STAGE 3:

Finalists attend the in-person
competition event.

Friday 4th April 2025 at Grainhouse.

**All finalists will be provided subsidised
travel and two nights complimentary
accommodation to attend the event.**

Guest speakers, mentoring, presentations
to the jury and judging process will all take
place face to face.

A structured agenda for the day
will be published in advance of the
competition final.

The 2025 winning team members will all receive:



A fast-track to the Hines internship programme.



**Free one-year ULI membership offering access to research, events, education,
and a global network of real estate professionals.**

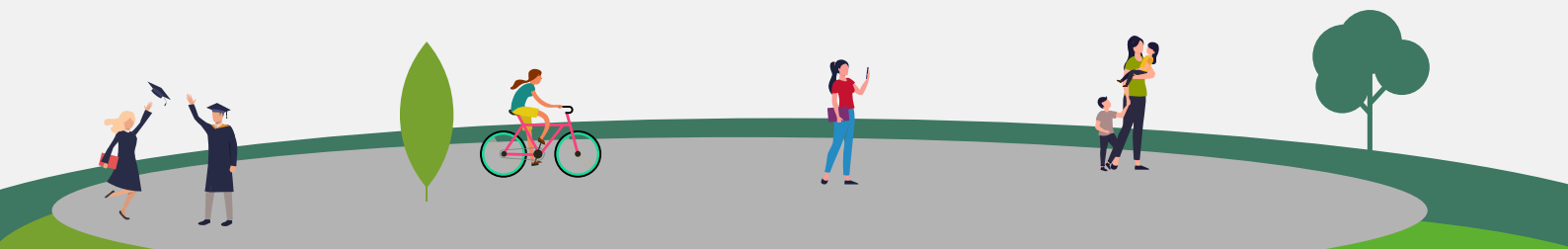


**A guided tour of a live development project and participation in project meetings in
Hines European offices (as travel restrictions allow).**



**A complimentary delegate pass to ULI Europe's flagship Annual Conference
in London, 16-19 June 2025.**

For details or to request a discussion or presentation visit
www.europe.uli.org/StudentCompetition or email Europe.events@uli.org





How to Apply

Visit the Website:

1. Go to www.europe.uli.org/StudentCompetition.
2. Click 'Apply Here' and create an application system login.
3. Upload all team members' CVs
4. Upload your teams 10-Minute Video



Create a Compelling Video:



Segment 1 (2 minutes):

- Introduce yourselves, backgrounds, and reasons for applying.
- Share your goals and expectations.



Segment 2 (4 minutes):

- Choose an inspiring building or development globally.
- Explain why it's exemplary, focusing on urban design, development, and community impact.



Segment 3 (3 minutes):

- Propose an idea for repurposing or adaptive reuse of another building.
- Briefly explain the current building type and the new use(s).
- Describe the community benefits, environmental and social impacts.
- Outline investment principles ensuring project viability.



Segment 4 (3 minutes):

- Propose innovative ideas to revitalize retail spaces.



We offer a short virtual presentation for your university/ business school to introduce the competition and address any questions. Contact us to schedule: Europe.events@uli.org



**The deadline
for submitting
your application is
Friday 14th February 2025.**

Get in touch to learn more:
europe.events@ULI.org

About us



The Urban Land Institute is a global, member-driven organisation comprising more than 48,000 real estate and urban development professionals dedicated to advancing the Institute's mission of providing leadership in the responsible use of land and in creating and sustaining thriving communities worldwide.

ULI's interdisciplinary membership represents all aspects of the industry, including developers, property owners, investors, architects, urban planners, public officials, real estate brokers, appraisers, attorneys, engineers, financiers, and academics.

Established in 1936, the Institute has a presence in the Americas, Europe, and Asia Pacific regions, with members in 81 countries.

ULI has been active in Europe since the early 1990s and today we have more than 4,000 members and 14 National Councils.

The extraordinary impact that ULI makes on land use decision making is based on its members sharing expertise on a variety of factors affecting the built environment, including urbanisation, demographic and population changes, new economic drivers, technology advancements, and environmental concerns. Drawing on the work of its members, the Institute recognises and shares best practices in urban design and development for the benefit of communities around the globe

Visit europe.uli.org for more information.

Hines

Hines is a leading global real estate investment manager. We own and operate €86.9¹ billion of assets across property types and on behalf of a diverse group of institutional and private wealth clients. Every day, our 5,000 employees in 31 countries draw on our 67-year history investing in, developing, and managing some of the world's best real estate.

To learn more, visit www.hines.com and follow @Hines on social media.

¹ Includes both the global Hines organization as well as RIA AUM as of 30 June 2024.

